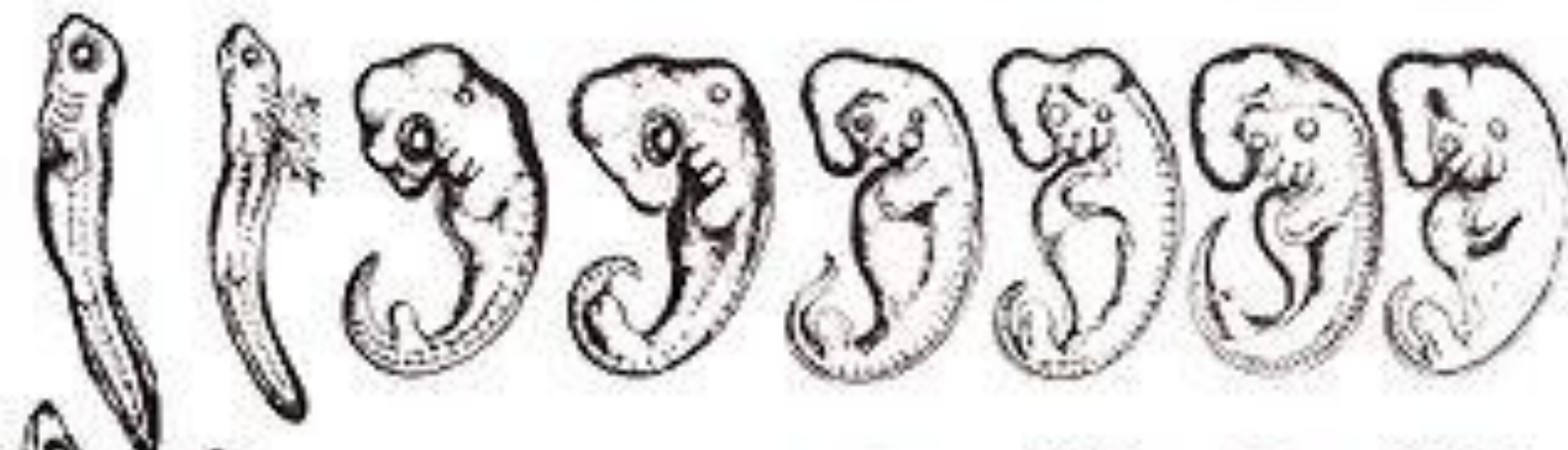


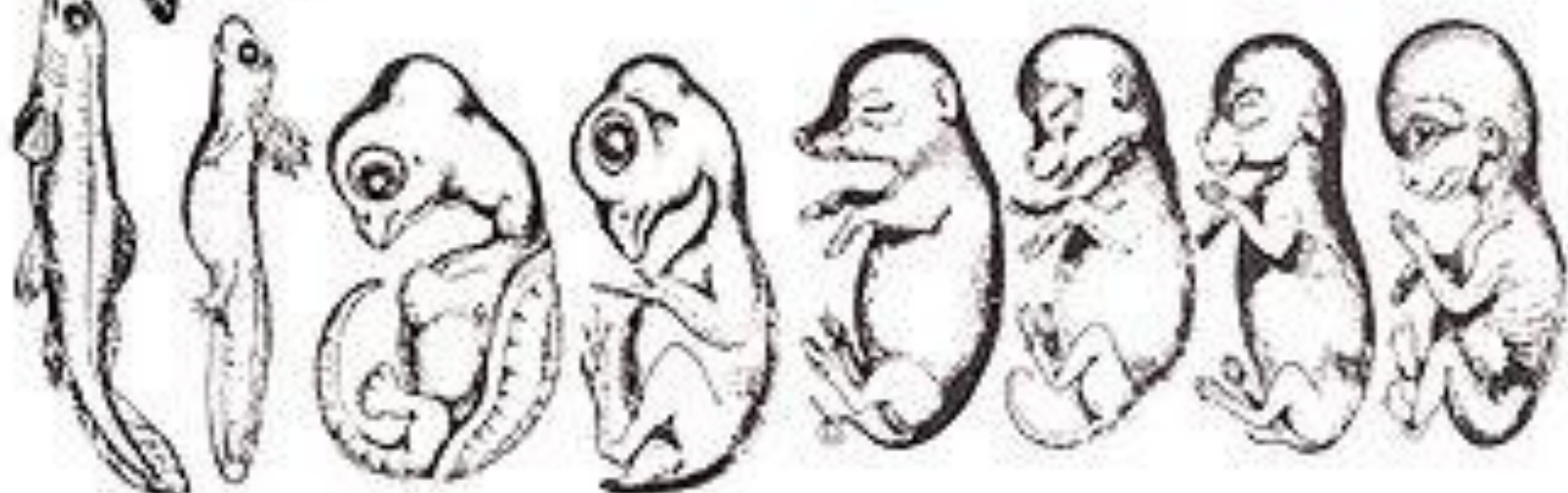
I



II



III



Fish Salamander Tortoise Chick Hog Calf Rabbit Human

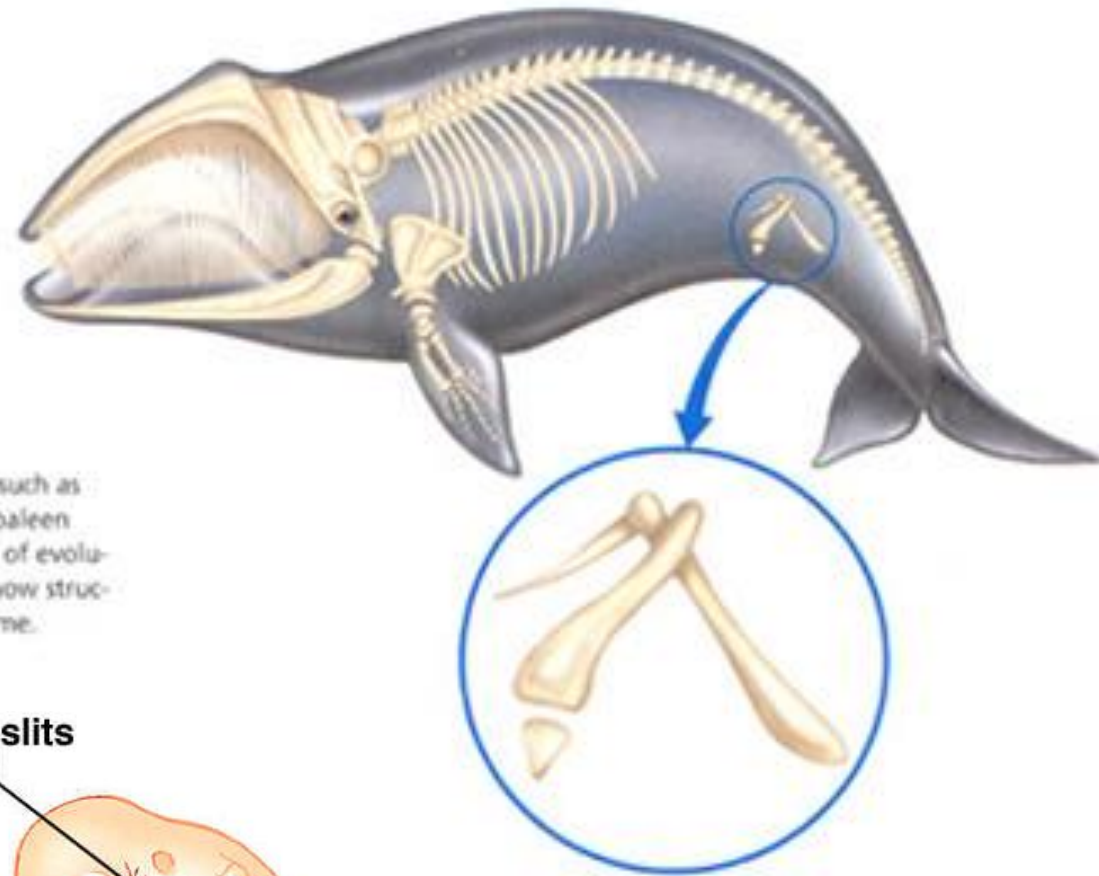
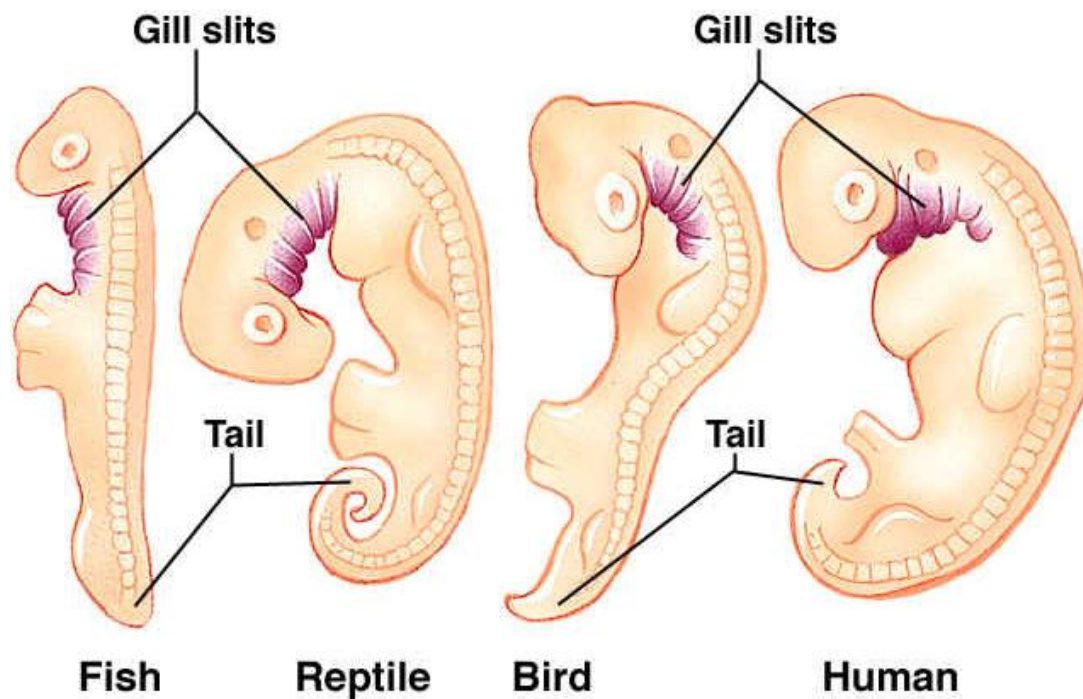
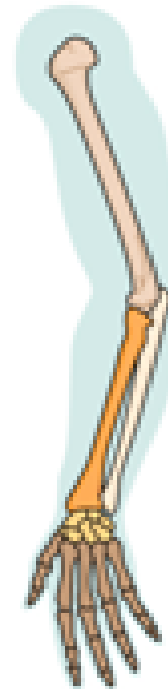
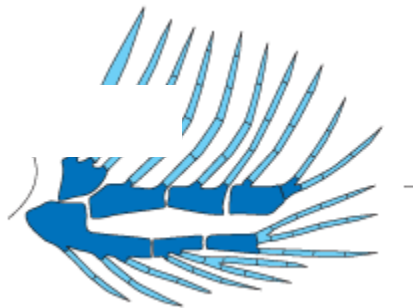
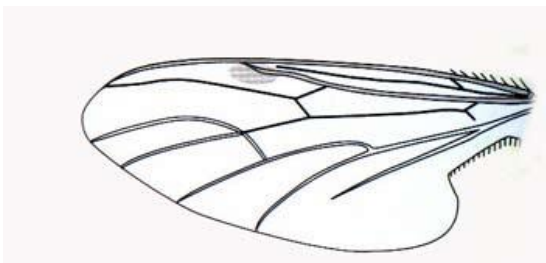
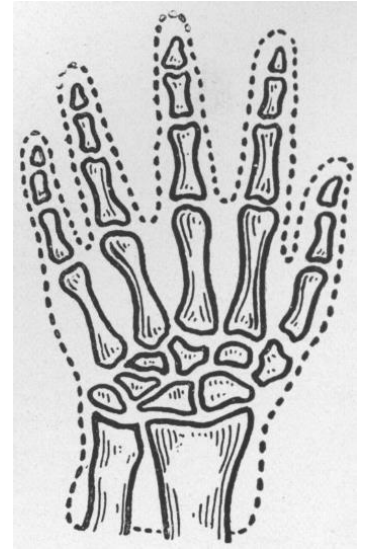
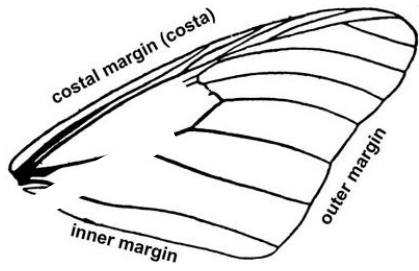


Figure 15.8
Vestigial structures, such as pelvic bones in the baleen whale, are evidence of evolution because they show structural change over time.





- Cytochrome c is a protein found in all aerobic organisms.
- The differences in the amino acid sequence of cytochrome c are used to determine how closely species are related.

Percent Differences in Cytochrome c

	Horse	Dog	Kangaroo	Penguin
Horse	0	6	7	12
Dog	6	0	7	10
Kangaroo	7	7	0	10
Penguin	12	10	10	0

Table 12-1 Hemoglobin Comparison

Species	Amino Acid Differences
	Compared with human hemoglobin
Gorilla	1
Rhesus monkey	8
Mouse	27
Chicken	45
Frog	67
Lamprey	125

